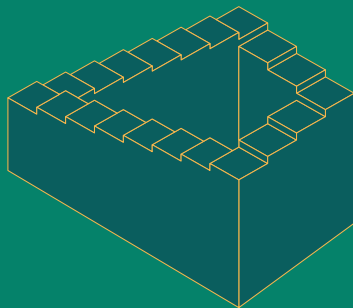


## FUN FACTS

CAN YOU MAKE THIS STAIRCASE WITH YOUR PAPER STRAWS AND JOINTS?



©2019 DESIGNED BY PLAYSTEAM EDUCATION LIMITED, LONDON.  
WEBSITE: [WWW.PLAYSTEAM.COM](http://WWW.PLAYSTEAM.COM) EMAIL: [INFO@PLAYSTEAM.COM](mailto:INFO@PLAYSTEAM.COM) ADDRESS: SUITE 35 - 36 THE DESIGNWORKS,  
PARK PARADE, LONDON, NW10 4HT. MANUFACTURED BY HANGZHOU ZT MODEL COMPANY LIMITED, ADDRESS: NO 6  
MINGDE RD., PUYAN, BINJIANG, HANGZHOU, CHINA.

# LEARNING BOOKLET

## Green Straw Architect



**WARNING:**  
CHOKING HAZARD - Small parts,  
Not for children under 3 years.

AGES **8+**



## WARNING MESSAGE

### GENERAL WARNING ⚠️

Before you begin, please read through the instructions together with your children. Make sure you understand the safety messages. Please keep the packaging and instructions, as they contain important information.

This kit is designed for children over 8 years of age. This product contains small parts which may pose a choking hazard. It is not suitable for children under 3 years old. Please keep individual parts and the fully-assembled product away from children under 3 years of age.

Screws and other metal parts may have sharp edges. Children should have adult supervision when assembling the product.

Last but not least, please clean the parts and finished product with a damp cloth. Do not use any soap or cleaning solutions.

## Package Contents



x30

• Joints



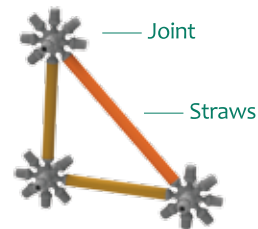
x90



x15

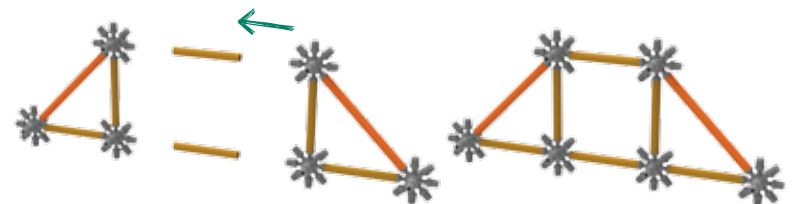
• Straws

## Installation steps

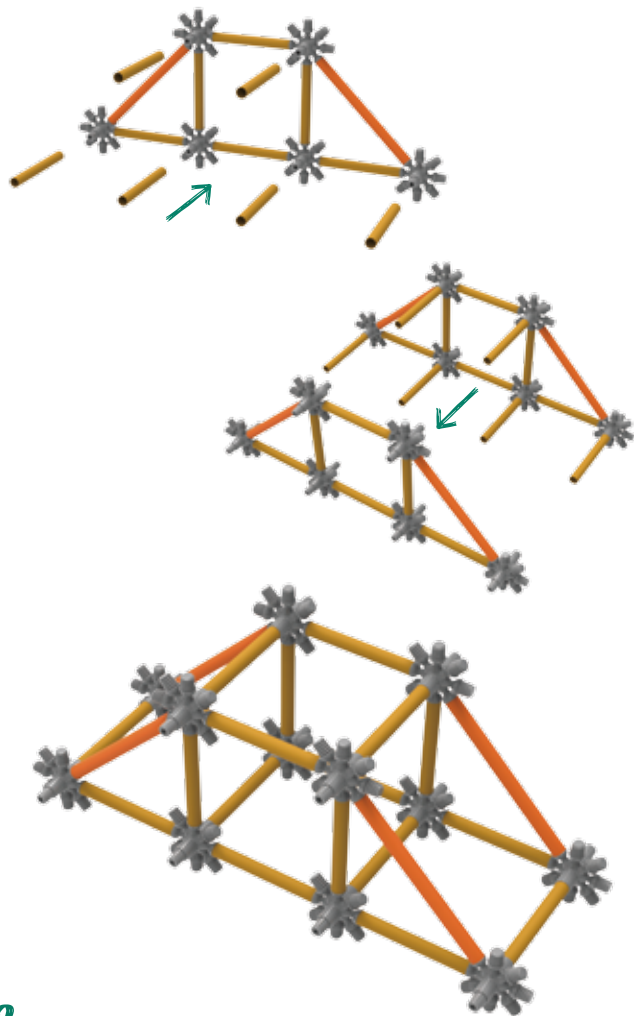


1. Assemble a simple triangle first paying attention to the color of the straws.

2. Assemble two triangles together to form a plane.



3. Combine several planes together to form 3D structures.



2

## What does it do?



Simply connecting the paper straws with the joints, Green Straw Architect can be built into various structures and buildings.

## How does it work?



In geometry, joints and paper straws are like dots and lines. Connecting straws to the joints from different directions creates planes. These planes can be combined to create 3-dimensional structures. Almost everything you see in daily life is 3-dimensional, They make our world look the way it does. With more straws and joints, you can even build world-famous buildings.

3

# FUN FACTS

## FUN FACTS 01

Do you know why the Eiffel Tower has this special shape, wide at the base and thin at the top?

Most tall towers have this kind of shape. The wide base ensures that the foundation is strong enough to support the weight of the tower while the upper part is thinner and lighter.



## FUN FACTS 02

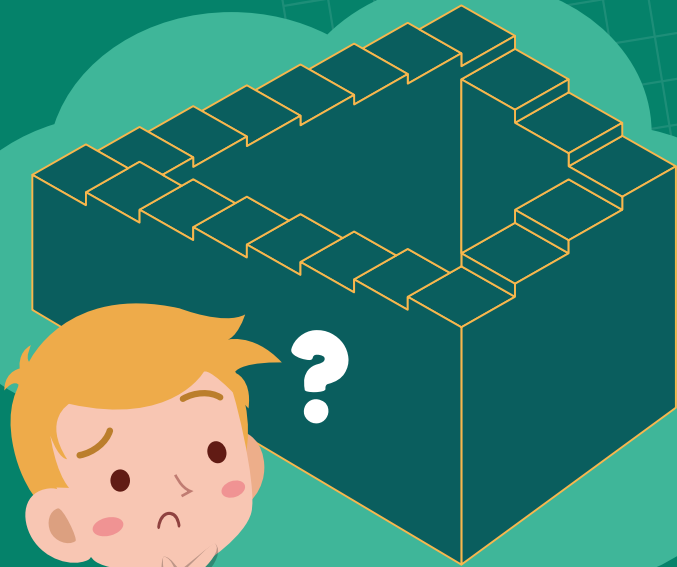
Plastic pollution has become a real problem and plastic straws are one of the most commonly found waste. There exist many alternatives such as paper or bamboo straws. Try to use those alternatives and recycle your plastic straws.



## ▷ FUN FACTS 03

**Can you make this staircase with your paper straws and joints?**

No need to try. These are called the Penrose stairs or Penrose steps. It is an impossible object imagined by Mr. Penrose, a mathematician and his father.



## ▷ FUN FACTS 04



Due to the nature of paper, the straws might become a bit loose after a certain period. You can recycle your own plastic and paper straws and reuse them to build whatever structure you like with the joints. Pay attention to the straw size, the joints are compatible with most of standard straws.





## FUN FACTS 05

Paper is a material widely used for many different purposes. Most of banknotes are made of a kind of paper. The actual composition is a secret and varies from country to country. It is mostly a mix of cotton, linen and other materials that make banknotes solid and durable.

