



©2018 DESIGNED BY PLAYSTEAM EDUCATION LIMITED, LONDON.

WEBSITE: WWW.PLAYSTEAM.COM EMAIL: INFO@PLAYSTEAM.COM ADDRESS: SUITE 35 - 36 THE DESIGNWORKS,
PARK PARADE, LONDON, NW10 4HT. MANUFACTURED BY HANGZHOU ZT MODEL COMPANY LIMITED. ADDRESS: NO 6
MINGDE RD., PUYAN, BINJIANG, HANGZHOU, CHINA.

PLAY • READ • INSPIRE

**THE LEARNING
BOOKLET**

— FOR THE SECRET PATTERN LOCKER —

Read to be inspired!



Slide to unlock

 **WARNING:**
CHOKING HAZARD - Small parts,
Not for children under 3 years.

AGES **8+**



TABLE OF CONTENTS

Warning Message	01
Package Contents	05
Installation Instructions	08
Activities	15
Fun facts	23



WARNING MESSAGE

GENERAL WARNING

Before you begin, please read through the instructions together with your children. Make sure you understand the safety messages. Please keep the packaging and instructions, as they contain important information.

This kit is designed for children over 8 years of age. This product contains small parts which may pose a choking hazard. It is not suitable for children under 3 years old. Please keep individual parts and the fully-assembled product away from children under 3 years of age.

Screws and other metal parts may have sharp edges. Children should have adult supervision when assembling the product.

This kit is intended for indoor use. Water and rain will damage the electronic components.

Last but not least, please clean the parts and finished product with a damp cloth. Make sure to remove the batteries from the battery compartment before cleaning. Do not use any soap or cleaning solutions.

OTHER WARNINGS

Using a screwdriver

- 1. Please ask parents or another adult permission to use the screwdriver.*
- 2. You must always be supervised by an adult when using the screwdriver. The metal may have sharp edges that can cause injury.*
- 3. Do not throw the screwdriver at other people or animals.*
- 4. Put the screwdriver back in its proper storage place after use.*
- 5. Do not use a screwdriver near children under 3 years of age.*

1 | WARNING MESSAGE

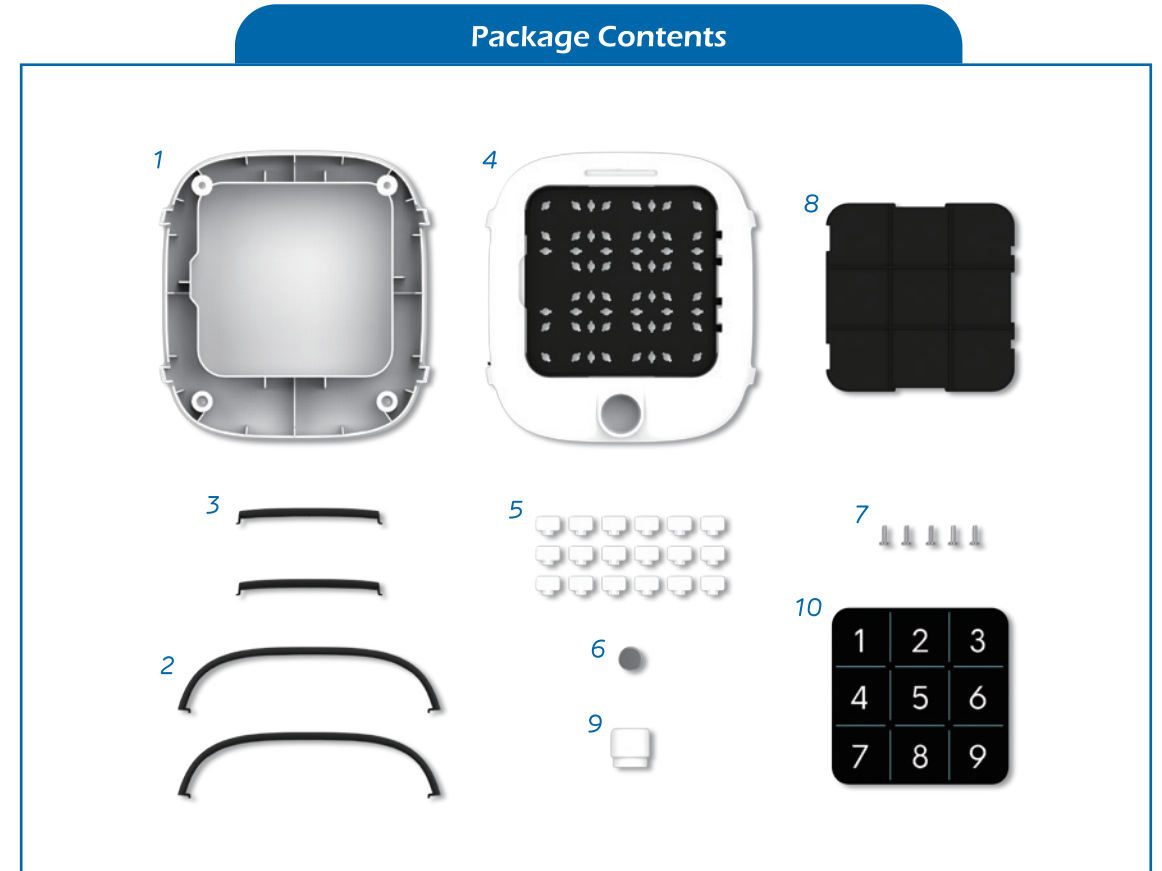




Read to be inspired!



2 | PACKAGE CONTENTS



Serial	Name	Quantity	Serial	Name	Quantity
1	Bottom	1	6	Puck	1
2	Long curved exterior segment	2	7	Screws	4 + 1(spare)
3	Short curved exterior segment	2	8	Baffle	1
4	Cover	1	9	Key	1
5	Stoppers	18	10	Stickers	1

Necessary but not included

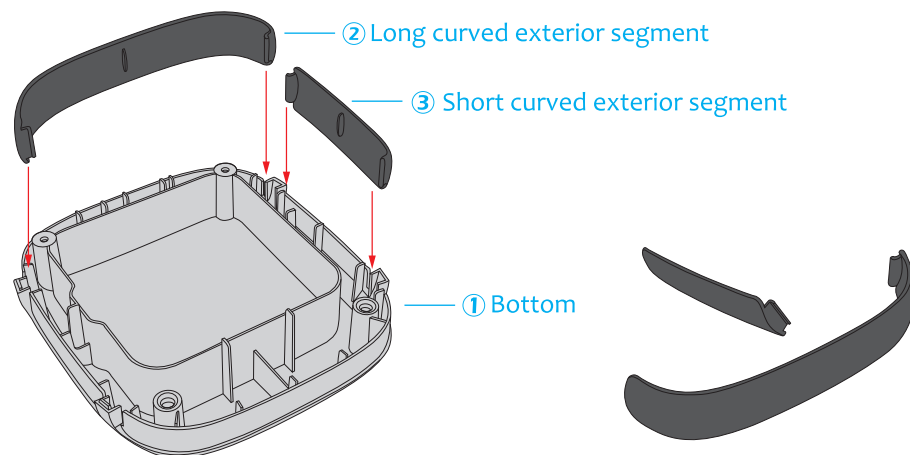


Cross-headed screwdriver

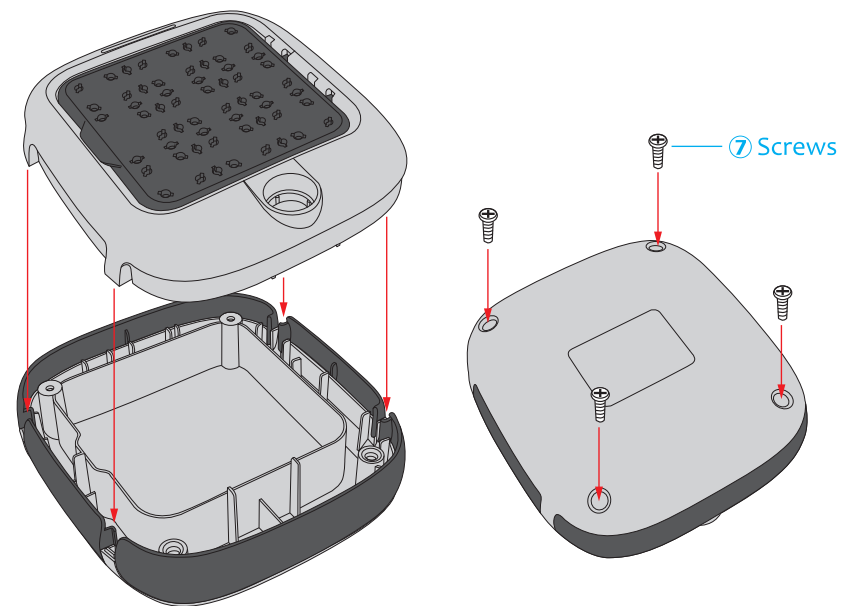
3 | INSTALLATION



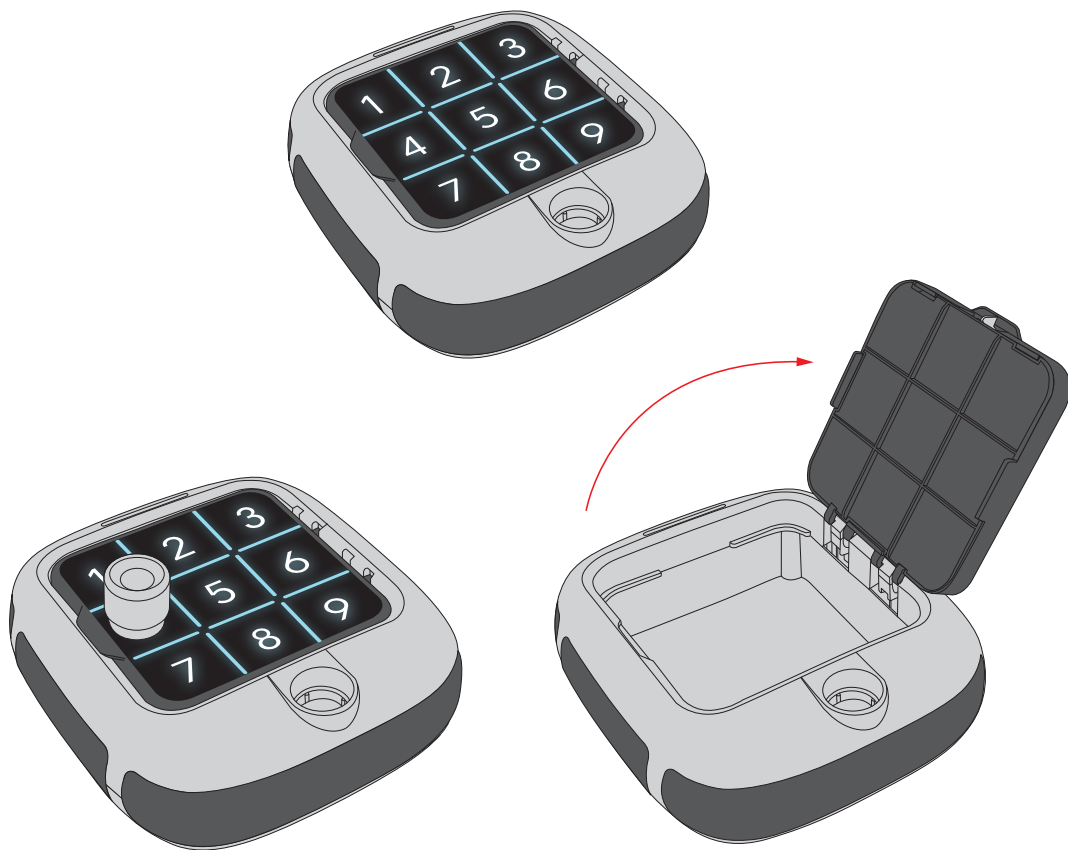
- 1 Attach the curved exterior segments to the bottom of the box.



- 2 Attach the box cover to the bottom of the box and tighten the screws.



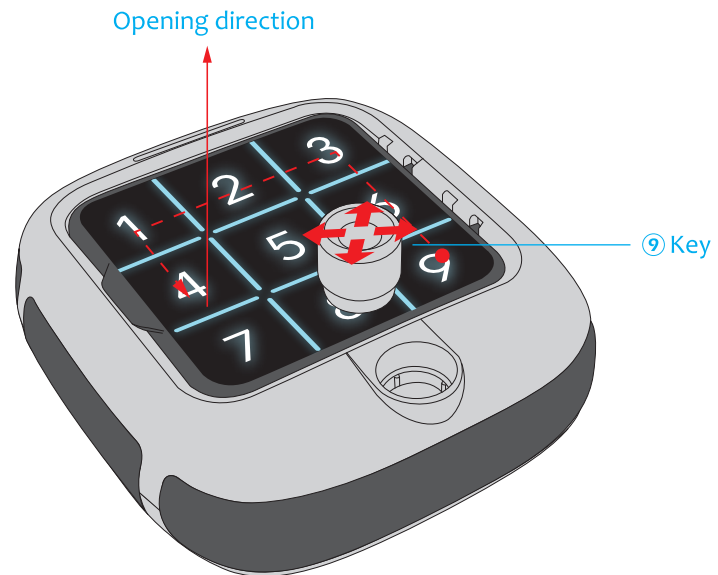
- 3 Apply the sticker to the door as shown on the diagram. The iron puck is already inside the door. To open the box bring the puck to the digit 4 position using the magnet key.



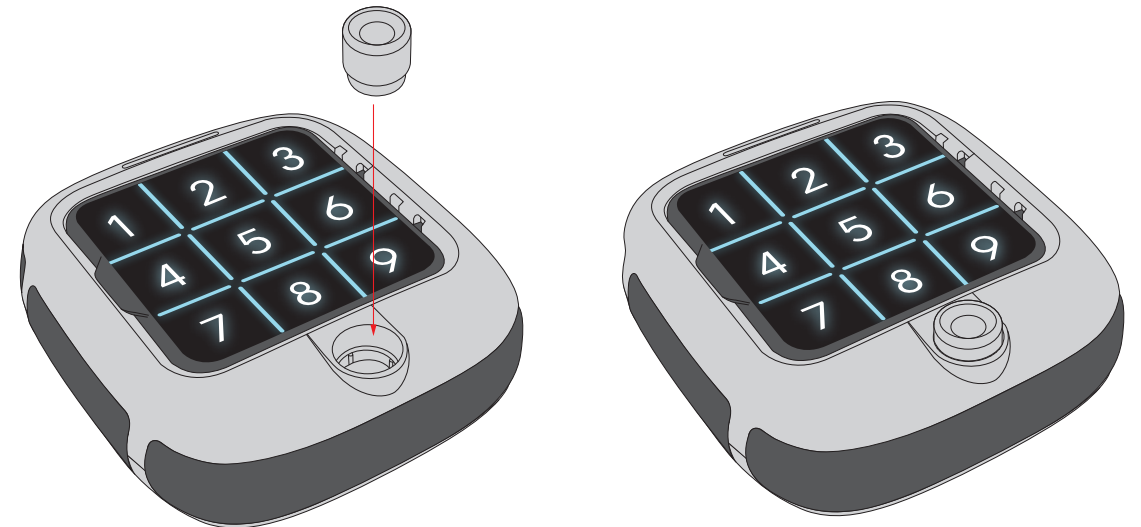
- 4 Remove the baffle. Set up your passcode by designing the pattern with the stoppers. Insert the puck inside the door (remember its position) and put the baffle back.



- 5 Close the door. Slide the magnetic key along the passcode area. To open the box, drag the puck, tracing the opening pattern until you reach the digit 4 position.



- 6 To avoid losing it, the key can be stored in the round hole after use.



4 | *ACTIVITIES*



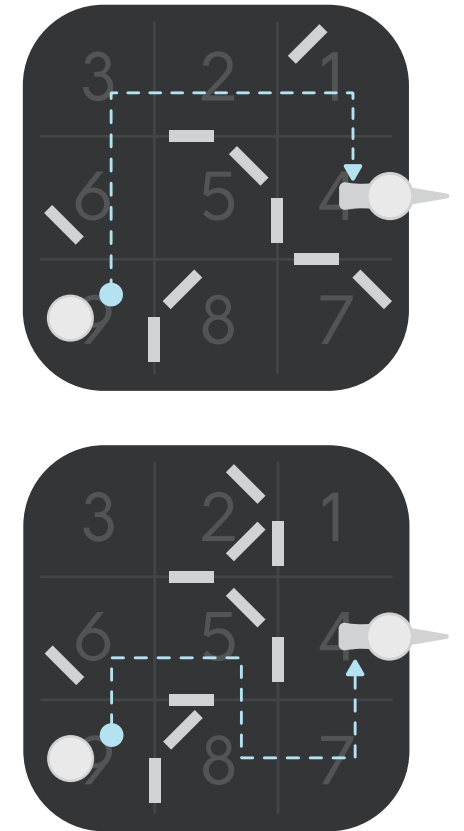
PLAY • READ • INSPIRE



What does it do?

Use this box as your personal locker. Unlock it by tracing the right number combination with the magnet key.

You can change the number sequence as often as you like to ensure that you are the only one who knows it.





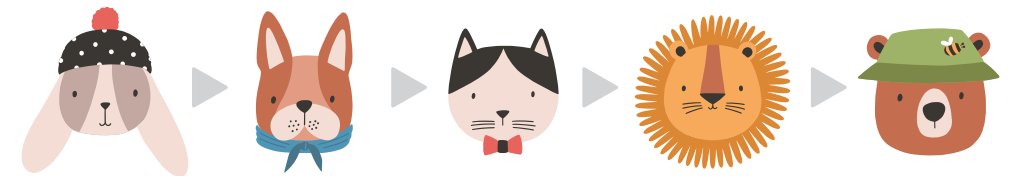
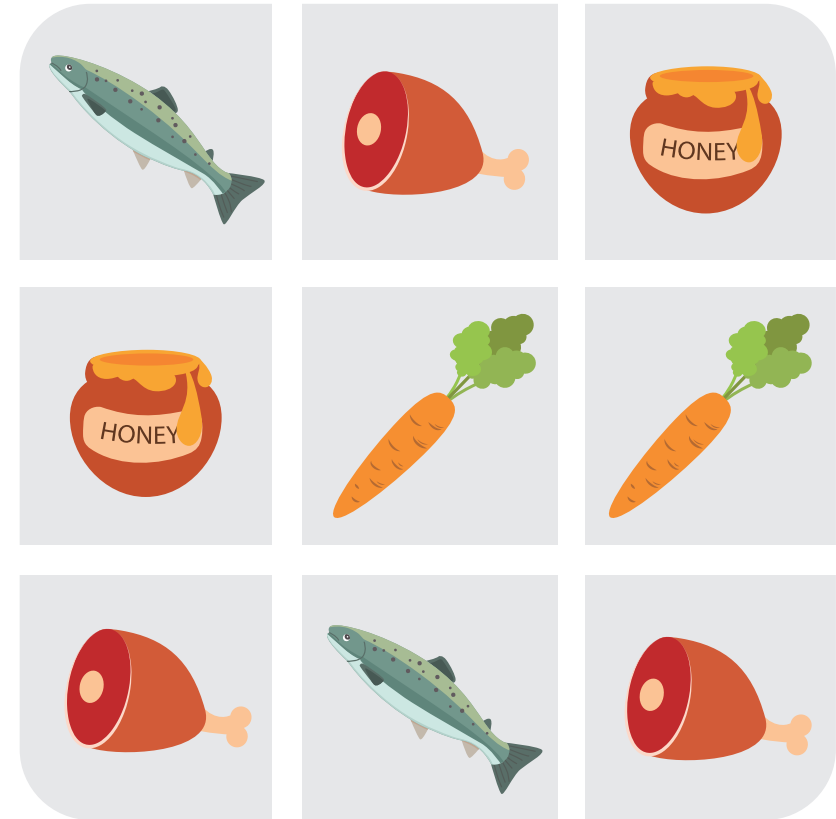
How does it work?

The gate contains an iron puck that can be moved using the magnet key. Following the combination with the key will lead the puck through the maze inside the gate. When the magnet reaches the 4th digit position, it pushes the lock out and allows you to open the box.



Digits are too easy?

Draw a grid and replace the digit with symbols. You can, for example, draw some animal food and write down the respective animal on a piece of sheet to remember the combination. Ask your friend to see if he can understand the hidden message and open the safe.





Read to be inspired!

During the early modern period and middle ages, kings and nobility used all kinds of secret boxes to hide valuable goods. At that time, the most valuable personal goods were mostly jewellery and gold.

Read to be inspired!

Do you know that the Egyptian pyramids are full of secret rooms and doors that hide ancient graves? Even now there are probably many of them that are still unknown.





Read to be inspired!

The oldest lock box dates as far back as the time of the pharaohs of Egypt. It was found in the tomb of Pharaoh Rameses II. It had movable pins that fell into the holes and locked the device.



Read to be inspired!

It's not always easy to keep a secret. During World War II, the Germans used something called the Enigma Machine to send encrypted messages. It was very sophisticated and was almost unbreakable.



