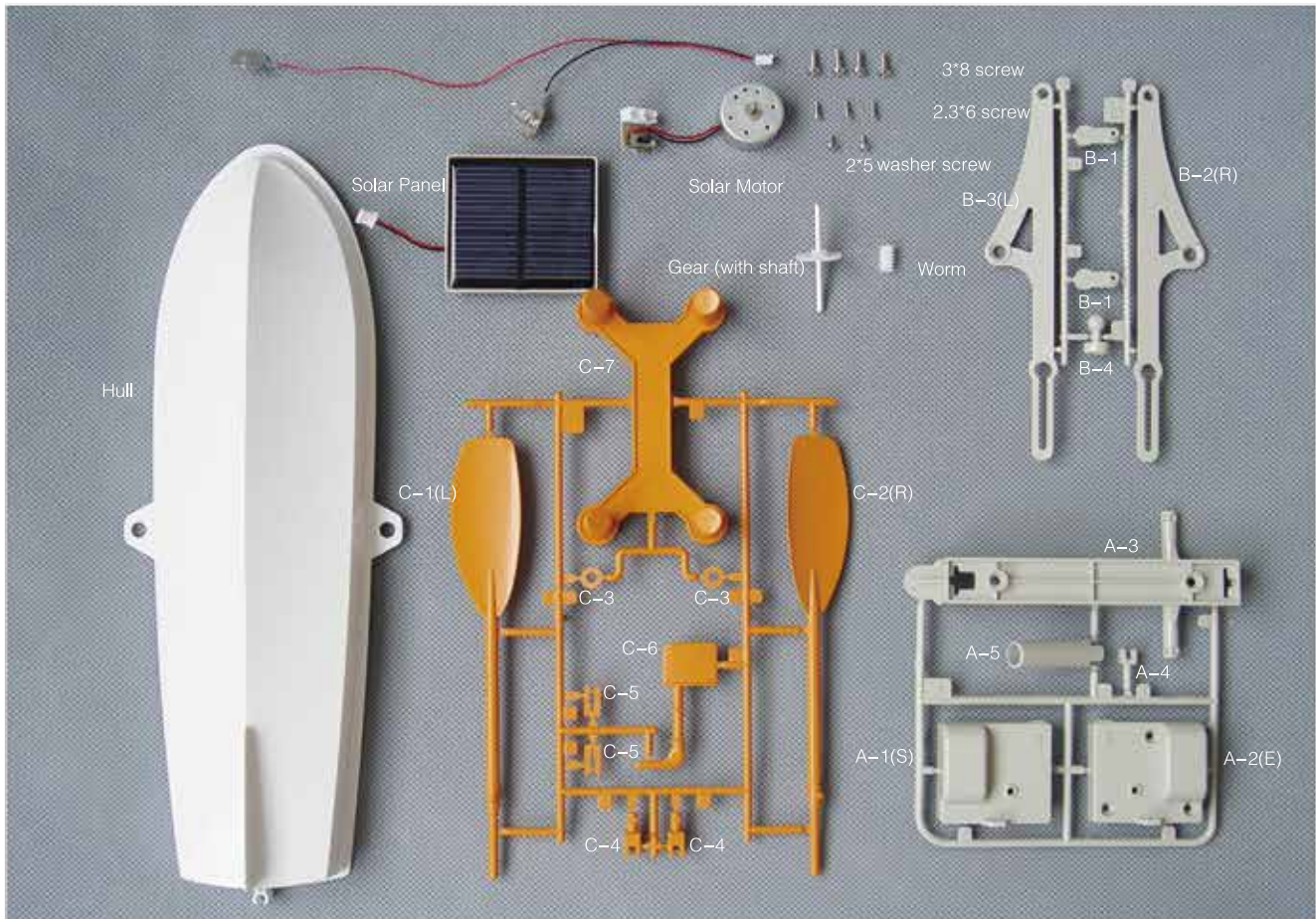


SUN SEEKER



AGES:14+

A. Parts List Sun Seeker - solar/battery powered row boat kit instructions



Please keep the package for the important information it contains.

B. Tools Needed: Cutter,
Magnetized screwdriver

C. Cautions:

1. Choking hazard –small parts.
(Not suitable for children under 3 years)
2. Do not play in water with weeds to avoid the boat getting tangled.
3. Pour water out when the hull is filled with water.

Note for battery usage

1. Batteries should be loaded with correct polarity.
2. The power terminal shall not be short-circuited.
3. Different types of batteries or old and new batteries shall not be mixed.
4. Used batteries should be removed from the model.
5. Non-rechargeable batteries cannot be charged.
6. Rechargeable batteries can only be charged under adult supervision.
7. Do not put the battery in the sunlight and throw it into the fire.
8. Use precaution when throwing away batteries.
9. Do not immerse the battery in water.



WARNING! Not a toy - Not suitable for children under 14 years old!

WARNUNG! Kein Spielzeug - Nicht für Kinder unter 14 Jahren geeignet!

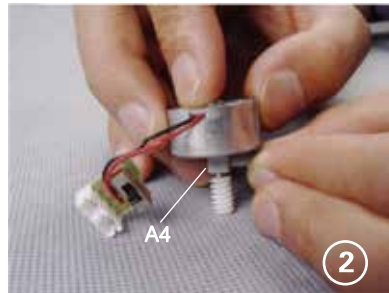
D. Photos:



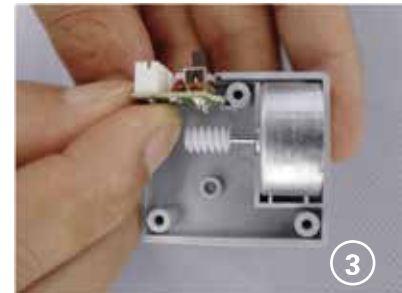
E. Assembly Steps:



1. Take the A1, A2 gear box off.



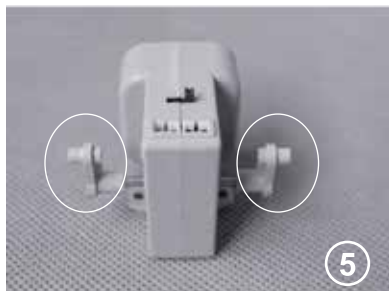
2. Slide the worm gear on the motor shaft while using A4 to leave space on the motor shaft.



3. Insert the motor in the gearbox half while paying attention to the wires. The wires need to be routed along the inner portion of the gearbox half. Pay close attention not to pinch the wires when assembling.



4. Insert the gear shaft with the gear into the S gear box half. (Make sure the gears are facing downward to mesh with the worm gear).



5. Attach B-1 parts to the shaft on each side of the gearbox assembly, making sure the arms are pointing upwards during the assembly.



6. Screw the gear box into the hull with two 3*8 screws.



7. Insert the battery "+" and "-" metal parts into the battery holder slots.



8. Route the wire along the slot under the battery tray.



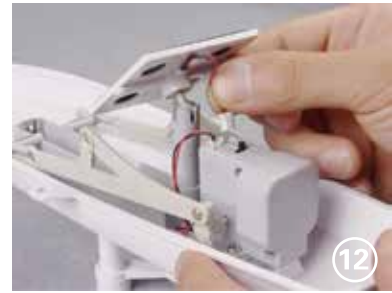
9. Fix the battery tray into the hull with 3*8 screws.



10. Put B2 and B3 into the rod near battery tray "+" side, with 2*5 washer screw connect the B2 and B3 with gear box.



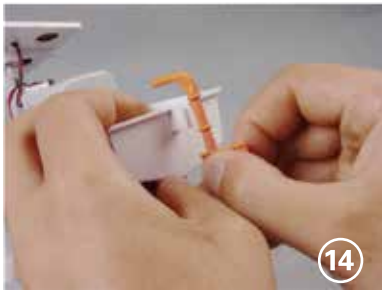
11. Connect A4, B4 and solar panel together.



12. Insert A5 into the battery tray. Insert the solar panel connector into the appropriate connection slot on the gear box assembly.



13. Place C3 into the holes on the side of the hull. Snap C1,C2 into C4 then insert C1/C2 through the holes on B2/B3 and C4 through C3. Snap the C5 on the bottom of C4 to keep it in place.



14. Insert C6 into the rudder slot. Take the boat stand off. Completed!



TIPS:

- ★ Adjust the rudder angle to let the boat move straight.

FCC Information

This device complies with Part 15 of the FCC Rules. Operation is subject to the following two conditions: (1) this device may not cause harmful interference, and (2) this device must accept any interference received, including interference that may cause undesired operation.

Warning: Changes or modifications to this unit not expressly approved by the party responsible for compliance could void the user's authority to operate the equipment.

This equipment has been tested and found to comply with the limits for a Class B digital device, pursuant to part 15 of the FCC Rules. These limits are designed to provide reasonable protection against harmful interference in a residential installation.

This equipment generates, uses and can radiate radio frequency energy and, if not installed and used in accordance with the instructions, may cause harmful interference to radio communications. However, there is no guarantee that interference will not occur in a particular installation. If this equipment does cause harmful interference to radio or television reception, which can be determined by turning the equipment off and on, the user is encouraged to try to correct the interference by one or more of the following

measures:

- Reorient or relocate the receiving antenna.
- Increase the separation between the equipment and receiver.
- Connect the equipment into an outlet on a circuit different from that to which the receiver is connected.
- Consult the dealer or an experienced radio/ TV technician for help.



Add: 301 E Mercury Drive, Suite 8 Champaign, Illinois 61822
Tel: +1(217) 402-2040 **Email:** USA@PlaySTEM.com
Manufactured By Hangzhou ZT Model Company Limited.
Address: NO 6 Mingde Rd., Puyan, Binjing, Hangzhou, China.

THE FACTORY HAS PASSED ISO9001: 2015 QUALITY MANAGEMENT SYSTEM CERTIFICATION.
COMPANY WEBSITE: www.playstem.com